



# Intelligent substation maintenance partner

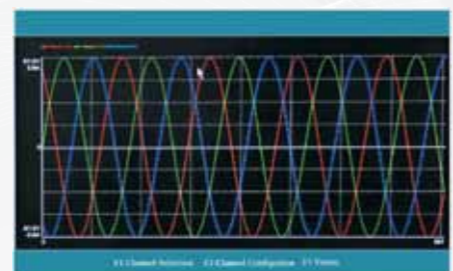
## NS601 Handheld Digital Signal Analyzer

Building a strong smart grid and popularization of the intelligent substation made secondary monitoring, protection has undergone a historic transformation. The change in the way of data transmission in process level has brought new problems to test and calibration work. The traditional instrument has not completed optical digital signal measurements, the living construction or substation maintenance person need a new method for optical digital signal analysis. NS601 handheld digital signal analyzer is a professional digital signal tools for the optical measurement, with multi-meter, oscilloscope, harmonics analyze, phase check, CT polarity analyze function, as well as, automatic detection, resolve IEC61850-8-1, IEC61850-9-1, IEC61850-9-2/LE, IEC60044-8 format messages, It's portable, stable and user-friendly, and also the essential tool for intelligent substation maintenance.



Portable  
Stable operation  
User-friendly,

Stable operating environment, high reliability.



Automatically detect IEC61850-9-1, IEC61850-9-2/LE, IEC60044-8 and display waveform, RMS value, phase

Analyze message status information including:  
• MU synchronization status  
• Channel validation status  
• Operating and maintenance status



IEC61850-9-1, IEC61850-9-2/LE, IEC60044-8 format SV message parameters are displayed in real-time.

IEC61850-9-1: LDName Number of ASDU Sample Frequency, Channel Number, Configuration Version Number, APPID, Rated Phase Current, Rated Neutral Current, Rated Phase

IEC61850-9-2: SVID, Number of ASDU, APPID, Channel Number, MAC Destination Address, Synchronization State, VLANMessage(Priority VID)

IEC60044-8: LDName, Sample F, Baud Rate, Rated Phase Current, Rated Neutral Current, Rated Phase Voltage, Rated Delay, Channel Number

Automatically detect IEC61850-9-1(GOOSE) message of different MAC address in the network and analyze the message of the optional GOOSE control model.

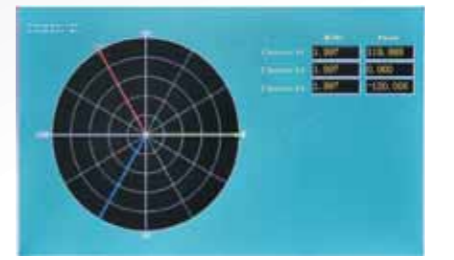
IEC61850-8-1: IGoCRef, GOOSE ID, DataSetRef, MAC destination address, APPID(OX), Allowed Survival time, Commission, test, configuration version, SInumber, SqNumber, Database Number, Vlan Sign (Priority, VID)

Real-time displays GOOSE status



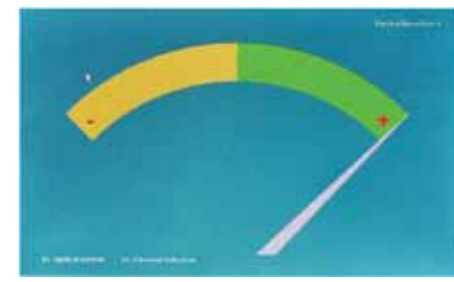
Real-time displays the GOOSE deflection

Offer history status consulting of GOOSE



2 group optical port  
receive signal from 2 groups MU at the same time  
comparing RMS, phase

Automatic Analyze harmonics information including:  
• Harmonics amplitude  
• Harmonics phase and phase  
• Frequency of the sample value



CT polarity test





## Technic parameter

### Environment Conditions

Altitude:  $\leq 4000\text{m}$   
Environment temperature:  $-10^{\circ}\text{C} \sim 50^{\circ}\text{C}$   
Relative humidity: 5%~95%  
Atmospheric pressure: 86~106 kPa

### Security Standard

GB / T 17626.2-1998 EMC testing and measurement techniques Electrostatic discharge immunity test 4  
GB / T 17626.4-1998 EMC testing and measurement techniques Electrical fast transient burst immunity test 4  
IEC 60255-21-1:1988 Electrical relays Part 21:  
Measuring vibration, shock, bump and seismic tests of relays and devices, Chapter One: Vibration tests (sinusoidal)  
Enclosure rating IP5X

### Power Supply

Battery: 6 18650 4400mAh large capacity lithium battery  
Charging power adapter:  
Input: 85V ~ 264V AC-DC Universal  
Output: DC19V, 4.74A  
Charging time: 2-3 hours full of need, the new battery charge time greater than 12 hours is recommended, at the first three times.  
full power working hours > 4 hours  
Standby time > 400 hours

### Support the signal detection and numerical analysis specification

IEC61850-9-1 signal samples  
IEC61850-9-2/LE signal samples  
IEC61850 GOOSE signal  
IEC60044-7 / 8 optical serial signal

### Interface parameters

1 USB port (OTG)  
2 100Mbps Optical Ethernet: 1310nm wavelength, receiving IEC61850-9-2 / 1 samples, GOOSE messages  
2 ST Interface: 850nm wavelength, multimode fiber interface (supports 2.5M, 5M, 10M baud rate), receiving the FT3 signal.

### Type of fiber optic cable

62.5/125um multi-mode fiber or 50/125um multi-mode fiber.

### Other parameters

Dimensions: 270mm (length)  $\times$  280mm (width)  $\times$  55mm (H)  
Display: 7 inch TFT color screen, 800  $\times$  480 dot-matrix, liquid crystal display  
Keyboard: 64-bit rubber full-function keyboard  
Expansion slot: SD card slot

### Self-protection

Built-in charging circuit and over-discharge protection circuit to ensure the reliability of rechargeable battery



**PONOVO**

# Handheld Digital Signal Analyzer



## PONOVO POWER CO., LTD.

2F,4Cell, Tower C, In.Do Mansion,  
No.48A Zhichun Road, Haidian District  
Beijing, PR China (100098)  
Tel.+86 (10) 8275 5151(reception)  
Tel. +86 (10) 8275 5151ext.8887  
Fax. +86 (10) 8275 5151-8103  
support@relaytest.com  
info@relaytest.com  
www.relaytest.com



Subject to modification without notice  
Revised in March 2012

www.relaytest.com